

Dream it...

...And We Will Build It



MANUFACTURER OF FIBERGLASS

Pools
Swim Shapers
Spas
Tanning Ledges
Waterfalls



www.leadingedgepools.com

Leading Edge

Building custom products for a lifetime of family fun!

We are the industry leaders in quality, innovation,
and customer satisfaction.

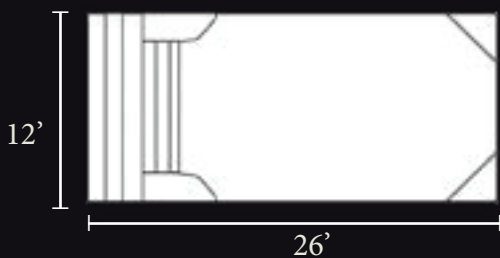
Leading Edge Pools is here to help you create unforgettable memories in your family's back yard. With our many years of industry knowledge and experience, you can rest assured knowing that we are doing our best to turn your backyard into a dream oasis.



Shoreline

LEADING EDGE POOLS

The Shoreline is the perfect small rectangular pool that will fit into the tightest of metropolitan backyards. This minimal design is the perfect pool to create a modern ambiance or for the family who wants to maximize a smaller swim space. The Leading Edge custom full length steps located in the shallow end give easy access to your two side wall benches for relaxing.



- Width 12'
- Length 26'



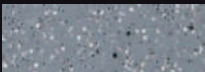
- Depth 4'6"
- Gallons 8,950
- Non-diving



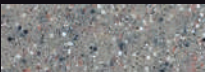
SELECT YOUR CUSTOM COLOR



Marina Blue



Gray Surf



North Shore



White

Bellaire

LEADING EDGE POOLS

The Bellaire has two elegant entry points on each side of the shallow end giving this swimming pool endless design capabilities. The deep end bench runs the full width of the pool inviting you and your loved ones to sit and enjoy. This design leaves a perfect lane in the center of your Bellaire pool, so you can enjoy swimming laps for your daily exercise or even playing water sports.



- Width 14'
- Length 31'

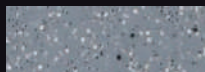


- Shallow End 3'4"
- Deep End 6'4"
- Gallons 14,237
- Non-diving

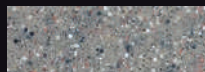
SELECT YOUR CUSTOM COLOR



Marina Blue



Gray Surf



North Shore



White



Pentwater

LEADING EDGE POOLS

The Pentwater is the largest rectangle pool in the Leading Edge pool family and sets industry standards for its size, design and safety features. You can enjoy the elegant design this pool offers in your backyard. The sizing of the Pentwater pool allows you to maximize your swimming space with elegance and style. The beautiful wedding cake steps are accompanied by two large shallow end benches on each side for those times you just feel like relaxing poolside.



- Width 16'
- Length 38'6"



- Shallow end 3'6"
- Deep end 6'4"
- Gallons 21,600
- Non-diving



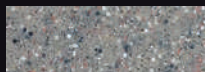
SELECT YOUR CUSTOM COLOR



Marina Blue



Gray Surf



North Shore



White

Hybrid Panels

LEADING EDGE POOLS

The hybrid fiberglass wall panel pool system gives you the capability to build any size and depth fiberglass swimming pool you can dream of. The endless design capabilities will let your imagination run free. All sizes available upon request.



RESIDENTIAL



COMMERCIAL

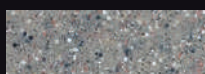
SELECT YOUR CUSTOM COLOR



Marina Blue



Gray Surf



North Shore



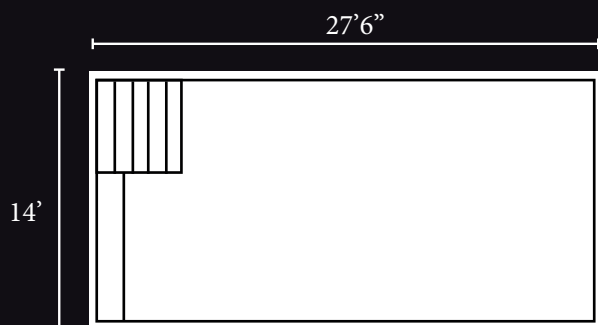
White



Augres

LEADING EDGE POOLS

Introducing the Augres, this contemporary rectangle design offers a large swimming area, comfortable bench next to the large walk in steps. This is a perfect pool for the family that is looking for simple and easy maintenance and one of the easiest pools to install.



- Width 14'
- Length 27'6"



- Depth 4'6" Flat
- Gallons 10,219
- Non-diving



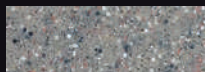
SELECT YOUR CUSTOM COLOR



Marina Blue



Gray Surf



North Shore



White

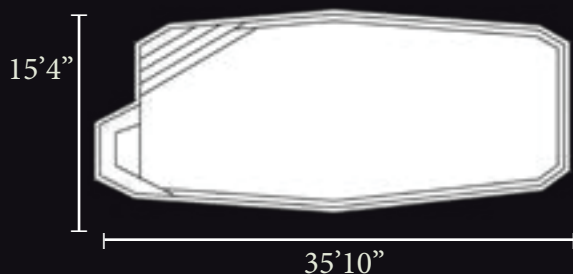
Manistique

LEADING EDGE POOLS

The Manistique model has our unique pool lounging area. Wrap around seating offers just enough room for intimate chats with friends or just some quality solo time relaxing in the sun. Our corner steps make for an easy entrance or can simply become the hangout spot for the little ones to enjoy.



COLOR SHOWN: BLUE SURF



- Width 15'4"
- Length 35'10"



- Shallow end 4'1"
- Deep end 6'2"
- Gallons 13,200
- Non-diving

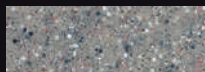
SELECT YOUR CUSTOM COLOR



Marina Blue



Gray Surf



North Shore



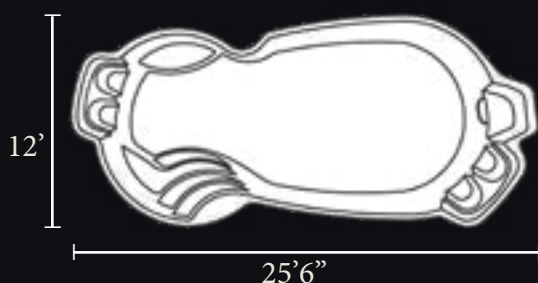
White



St. Clair

LEADING EDGE POOLS

The St. Clair pool beckons your backyard visitors to relax in its pristine waters. The Leading Edge buddy seats and sitting ledge allow for ample sitting space to help unwind after work. The angled side base steps offers a unique entry point for your backyard paradise.



- Width 12'
- Length 25'6"



- Shallow end 3'8"
- Deep end 5'3"
- Gallons 7,000
- Non-diving



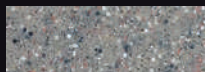
SELECT YOUR CUSTOM COLOR



Marina Blue



Gray Surf



North Shore



White

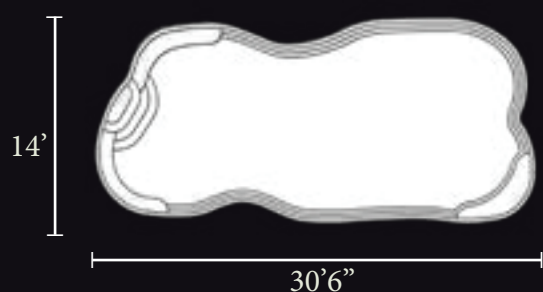
Petoskey

LEADING EDGE POOLS

The Petoskey model is a smaller version of our large Grand Traverse pool. This pool is a great setting to capture those perfect sunsets while lounging in its corner bench. The elegant curves surrounding its perimeter makes for perfect locations to add on extra water features. Relax, rejuvenate and let your days float away in your very own paradise.



COLOR SHOWN: MARINA BLUE



- Width 14'
- Length 30'6"



- Shallow end 3'9"
- Deep end 5'8"
- Gallons 10,400
- Non-diving

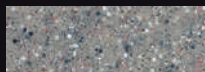
SELECT YOUR CUSTOM COLOR



Marina Blue



Gray Surf



North Shore



White



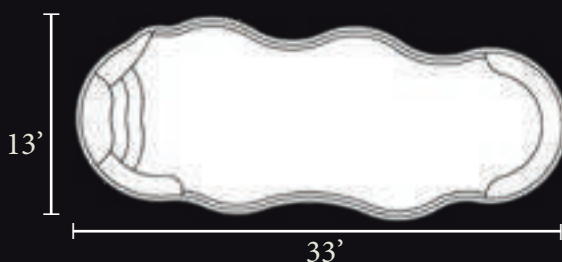
Bay Shore

LEADING EDGE POOLS

The Bay Shore is a perfect addition to your backyard setting. The wrap around deep end bench will invite your guests to relax and have some fun and laughs. Our unique freestyle shape will have friends talking about your pool. Dual bench seating in the shallow end offers an area for your swimmers to play or just that quiet spot to unwind alone.



COLOR SHOWN: MARINA BLUE



- Width 13'
- Length 33'



- Shallow end 4'1"
- Deep end 6'2"
- Gallons 10,400



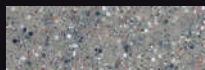
SELECT YOUR CUSTOM COLOR



Marina Blue



Gray Surf



North Shore

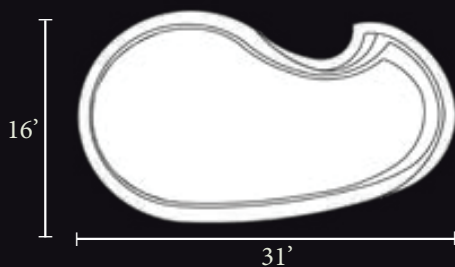


White

Crystal Bay

LEADING EDGE POOLS

The Crystal Bay model is a uniquely shaped pool for fun. The side entry stairs are conveniently located to maximize play space. This is the perfect pool to slide down a water slide or play Marco Polo with the kids. Whatever your pool fun is, it will surely make lasting memories for all to remember.



- Width 16'
- Length 31'

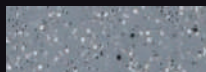


- Shallow end 3'6"
- Deep end 7'
- Gallons 14,000

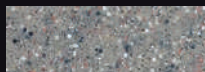
SELECT YOUR CUSTOM COLOR



Marina Blue



Gray Surf



North Shore



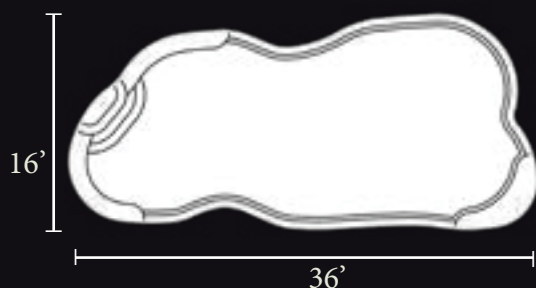
White



Traverse Bay

LEADING EDGE POOLS

The Traverse Bay pool will welcome family and guests to swim freely across its water with ease. Its size and comfort makes it quite impressive. If the “wow-factor” is what you’re after, the Traverse Bay is the perfect pool for you and your family! The elegant free-form design will impress your family and friends.



- Width 16'
- Length 36'

- Shallow end 3'5"
- Deep end 5'9"
- Gallons 14,700



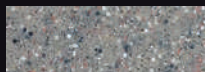
SELECT YOUR CUSTOM COLOR



Marina Blue



Gray Surf



North Shore

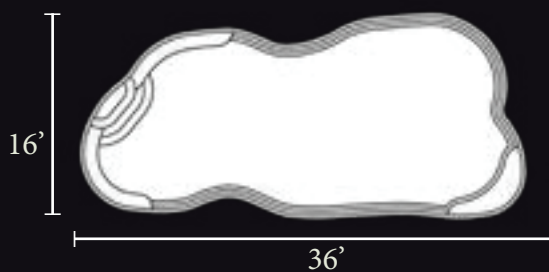


White

Grand Traverse

LEADING EDGE POOLS

The Grand Traverse model is a large pool and creates the full bay effect. This full size model offers a deep end cove located at one corner. The optional spillover spa will allow you to experience paradise. The unique free-form flow helps create your own tranquil oasis.



- Width 16'
- Length 36'



- Shallow end 3'5"
- Deep end 8'2"
- Gallons 18,600

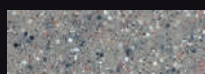
SELECT YOUR CUSTOM COLOR



Marina Blue



Gray Surf



North Shore



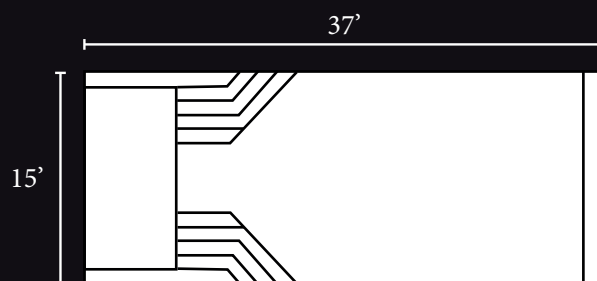
White



Grand Ledge

LEADING EDGE POOLS

This spectacular rectangle pool is perfect for the entire family to enjoy. There is a large swimming area for enjoying a refreshing swim and a special area for children and sunbathers to relax and play in the safety of shallow water while lounging in your favorite beach chair. This model is made for power covers.



- Width 15'
- Length 37'

- Shallow end 3'4"
- Deep end 6'4" Non-diving
- Gallons 16,000
- Tanning area 6'x15' depth 1'4"



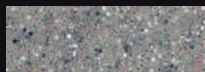
SELECT YOUR CUSTOM COLOR



Marina Blue



Gray Surf



North Shore

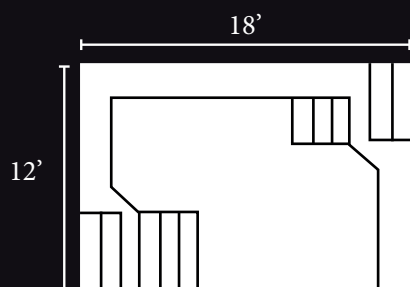


White

Paradise

LEADING EDGE POOLS/SPAS

The name says it perfectly! The Paradise is sure to make the perfect backyard retreat for your loved ones and close friends. This model is considered a spool (Spa or a pool whichever you choose). Use it to cool off in the hot summer or to relieve your every day pain while soaking in 102 degree spa water with powerful hydrotherapy jets massaging your back after a tough day at work. This spool will be the closest you can get to your very own Paradise! Time to pour a glass of wine and relax Ahh!



- Width 12'
- Length 18'



- Depth 5' flat (constant)
- Gallons 5,610

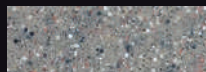
SELECT YOUR CUSTOM COLOR



Marina Blue



Gray Surf



North Shore



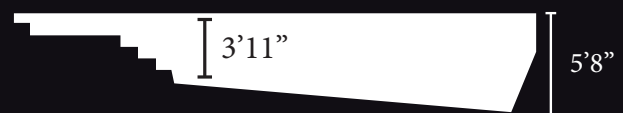
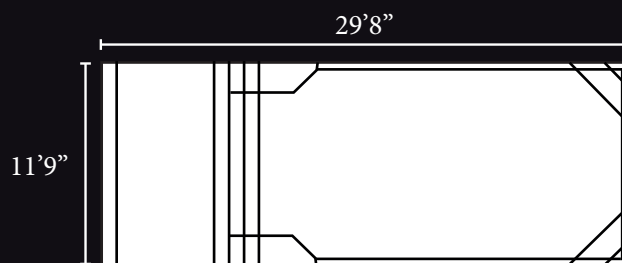
White



Charlevoix

LEADING EDGE POOLS

The Charlevoix is the perfect small rectangle pool with a beautiful built in sun ledge tanning area that will be a relaxing spot to lounge in the summer sun. The Leading Edge custom full length steps located in the shallow end gives for easy access to your two side wall benches, so after those long swims you can relax and enjoy endless hours of entertainment.



- Width 11'9"
- Length 29'8"

- Shallow end 3'11"
- Deep end 5'8"
- Gallons 7665



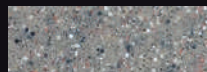
SELECT YOUR CUSTOM COLOR



Marina Blue



Gray Surf



North Shore

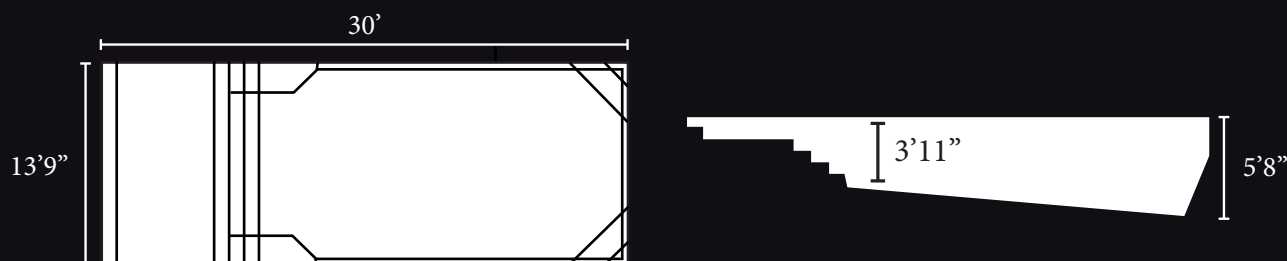


White

Bay Harbor

LEADING EDGE POOLS

The Bay Harbor our new model for 2024 is a midsize pool based on our best selling model the Grand Ledge. You will enjoy all of the beautiful seating and the large sun shelf for enjoying your personal lounging area in your favorite chair. Jump in and enjoy the Bay Harbor!!



- Width 13'9"
- Length 30'

- Depth 3'11" - 5'8"
- Gallons 13,200

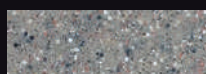
SELECT YOUR CUSTOM COLOR



Marina Blue



Gray Surf



North Shore



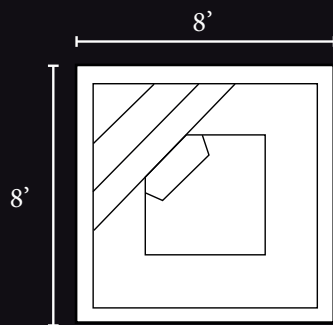
White



Boyne Falls

LEADING EDGE SPAS

The Boyne Falls is the perfect addition to any rectangle pool or with a raised wall with a water feature to enjoy. Plenty of seating is built into this model with a capacity of 6-8 persons. Enjoy the peaceful sound of a water fall in your backyard!



- Width 8'
- Length 8'



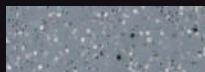
- Spa Depth 3'6"
- Gallons 450



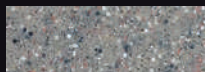
SELECT YOUR CUSTOM COLOR



Marina Blue



Gray Surf



North Shore



White

Full Moon

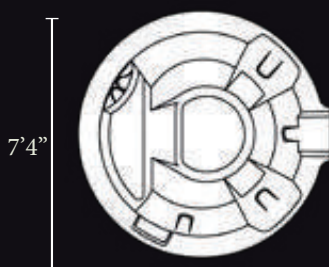
LEADING EDGE SPAS

The Full Moon is the perfect round spa to enjoy relaxing days and evenings with family and friends. It has room to seat five adults. For the perfect hydro-therapy relaxation, we can customize the placement of our Leading Edge therapy jets at the factory. The aesthetically pleasing spillover waterfall feature adds to the design.

Enjoy our Full Moon seating and timeless symmetric shape.



COLOR SHOWN: BLUE SURF



• 7'4" Diameter



• Depth 2'8"
• Gallons 450

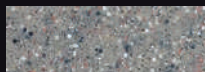
SELECT YOUR CUSTOM COLOR



Marina Blue



Gray Surf



North Shore



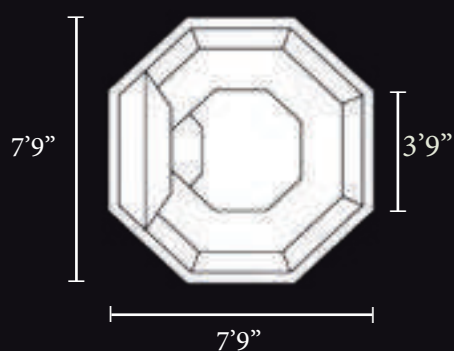
White



Starlight

LEADING EDGE SPAS

The Starlight is the perfect octagon shaped spa to enjoy long nights relaxing under a starry sky. The attractive and modern feel comfortably seats up to five adults in this spacious spa tub. The Starlight offers custom jet options in the design to provide a lifetime of relaxation.



- Width 7'9"
- Length 7'9"



- Deep End 3'3"
- Gallons 650



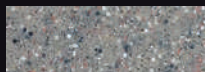
SELECT YOUR CUSTOM COLOR



Marina Blue



Gray Surf



North Shore

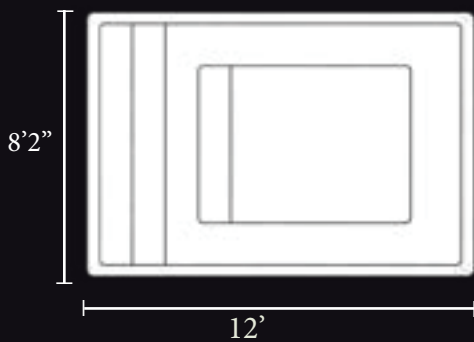


White

Stargazer

LEADING EDGE SPAS

The Stargazer is the perfect spa for all your commercial and residential large spa needs. This unique spa seats up to twelve adults comfortably. The unique, deep bench seating wraps around the entire perimeter of this spa and offers customizable inlaid tiling. Plan your backyard hot tub parties around the Leading Edge Stargazer hot tub.

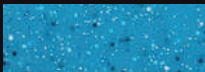


- Width 8'2"
- Length 12'



- Seating Depth 1'11"
- Deep End 3'3"
- Gallons 1,560

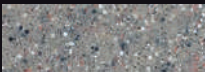
SELECT YOUR CUSTOM COLOR



Marina Blue



Gray Surf



North Shore



White

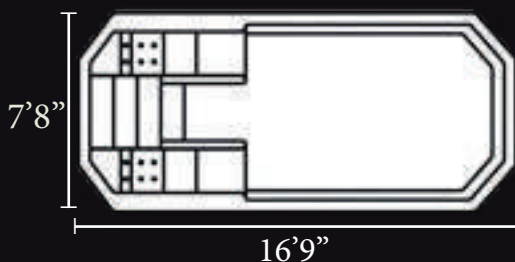


The Rejuvenator

SWIM SHAPER II

Keep Fit By Swimming Against Engineered Water Current

The Swim Shaper II has a very sleek, European-inspired design which allows for a smoother swimming experience. Two deep lounging seats with built in therapy jets to ensure the ultimate relaxing and rejuvenating experience. Our adjustable custom resistance swim jets are engineered to challenge swimmers of all levels. Perfect Swim spa for indoor or outdoor installation applications.



- Width 7'8"
- Length 16'9"



- Depth 4'
- Gallons 3,360



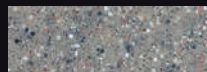
SELECT YOUR CUSTOM COLOR



Marina Blue



Gray Surf



North Shore



White

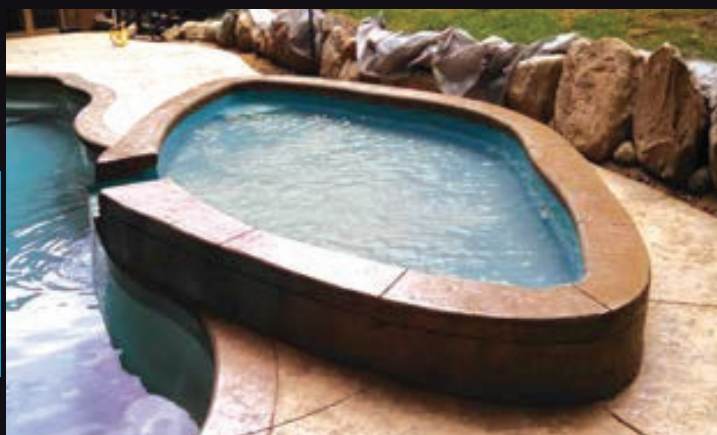
TANNING LEDGES

These tanning ledges are where you will spend your time day dreaming as you lay in the shallow water and bask in the sunshine. These tanning ledges feature a spacious lounging capacity with a therapeutic spillover.

The Bronzer The Relaxer



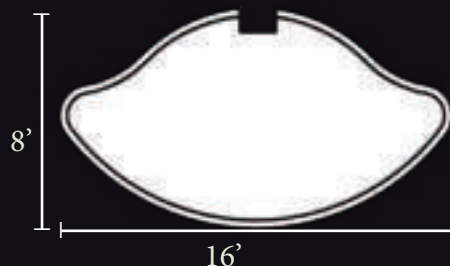
COLOR SHOWN: BLUE SURF



COLOR SHOWN: MARINA BLUE



- Width 4'2"
- Length 15'9"
- Depth 1'2"
- Gallons 350



- Width 8'
- Length 16'
- Depth 1'2"
- Gallons 650

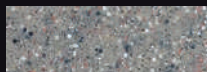
SELECT YOUR CUSTOM COLOR



Marina Blue



Gray Surf



North Shore



White



Leading Edge



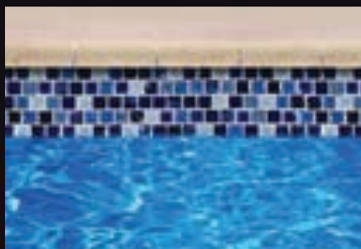
TILES



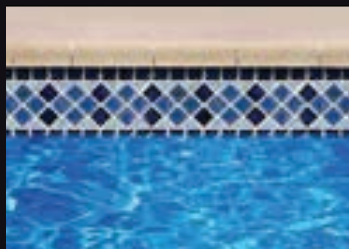
MOSAICS



PORCELAIN 1x1



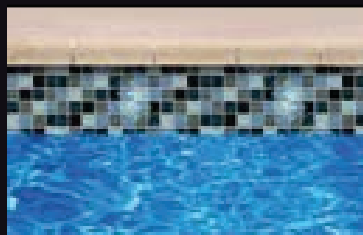
CUSTOM TILE



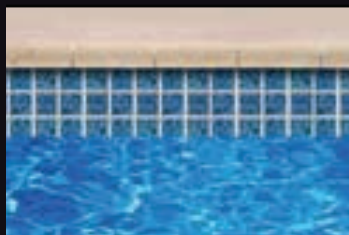
COMPASS MEDALLION



DOLPHIN MEDALLION



GLASS TILE



PORCELAIN 2x2



TREES



TURTLES

Making **A LIFETIME** of

Happy Memories

ONE POOL at a time



Leading Edge

STRUCTURAL ENGINEERING PROCESS



Built with local north American raw materials to handle the harshest of climates possible.

Leading Edge Premium Marine Grade Colored Gel Coat With Our Exclusive Leading Edge Algae & Bacteria Defense System

Our gel is mixed with our algae and bacteria defense system as an anti-microbial agent. It is then applied to the mold to give a UV protective layer against harmful sun light rays & helps inhibit the growth of algae and waterborne bacteria. Our gel is the same material used in the manufacturing process of boat hulls and jet liners.

Leading Edge Vinyl Ester Barrier Coat

Provides the industries best defense against exterior groundwater penetration and osmotic blistering of the gel coat.

Leading Edge Corrosion Resistant Barrier Skin Coat

A layer of fiberglass resin and chopped fiberglass strands are applied as the first structural layer.

Heavy Layer of Chopped Fiberglass

Fiberglass strands are applied to the structure for superior strength.

Leading Edge Hand-laid 36 oz Woven Fiberglass Mat

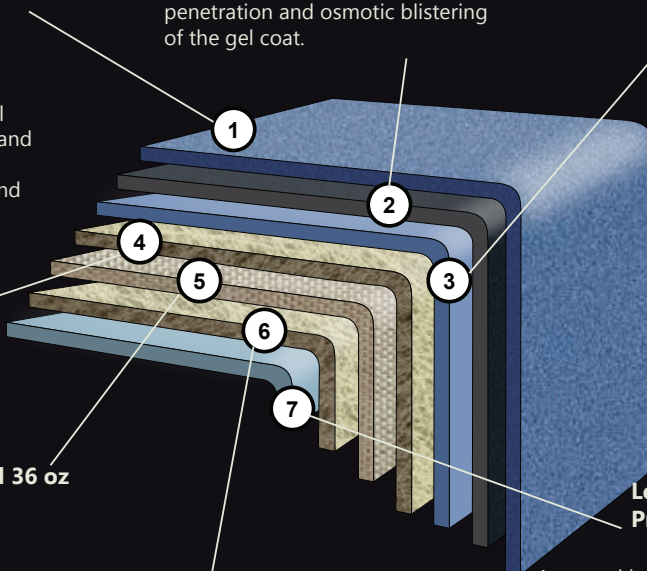
Bi-directional layers of fiberglass mat is applied for additional strength and durability.

Second Layer of Heavy Chopped Fiberglass

Additional layer of fiberglass strands are applied again to the structure giving it superior Leading Edge strength.

Leading Edge Outer Protective Coating

A second layer of clear premium marine grade gel coat is applied.



CUSTOMIZABLE LIGHTING & AUTOMATION DESIGNS

Illumination is the essential partner of architecture. Light is like an “artist” it has the ability to create dynamics and mood. Lighting has become a creative extension of design, improving visibility, complementing form, and color. When a beautiful light is added to a swimming pool it now becomes a magical place.

Our Leading Edge experience, talent and high attention to detail will guide you through the right type of lighting and automation options available to create that special setting for in your backyard.

LED LIGHTING



LAMINAR DECK JETS

Leading Edge Pools



MANUFACTURER OF FIBERGLASS

Pools
Swim Shapers
Spas
Tanning Ledges
Waterfalls

Contact Us!



www.leadingedgepools.com

844.450.7665